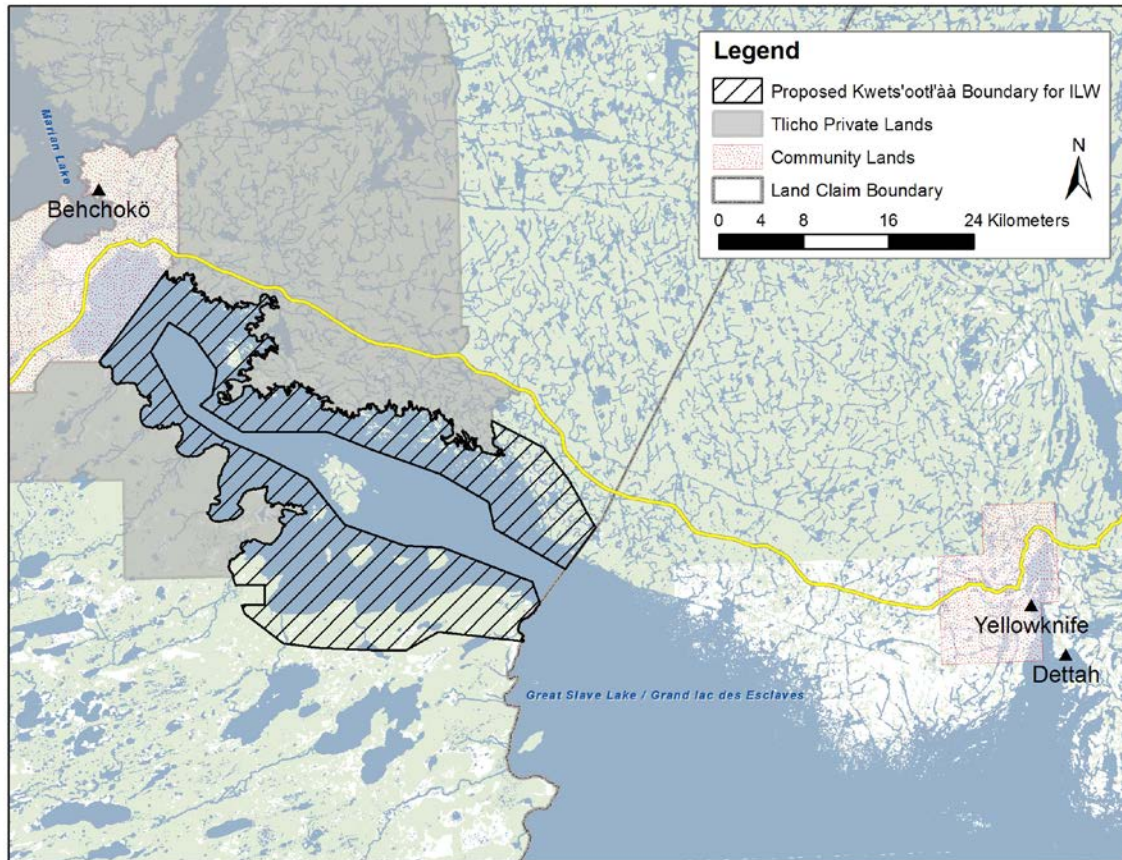


Notice of Application for Interim Land Withdrawal

In June 2010, the Tłı̄ch̄o Government submitted a proposal for the advancement of Kwets'oot'àà through the NWT Protected Areas Strategy as a candidate National Wildlife Area. Environment Canada's Canadian Wildlife Service agreed to sponsor Kwets'oot'àà and to work with the Tłı̄ch̄o Government and other stakeholders to evaluate the area for designation under the *Canada Wildlife Act*.

In the summer of 2011, Environment Canada, as part of the 8-Step Protected Areas Strategy process, will apply for a five-year interim surface and subsurface land withdrawal of the lands within the study boundary excluding existing leases and third party lands. Existing third party interests will be respected. The interim land withdrawal is a planning tool used to ensure that no new third-party interests are established during the protected area planning process.

For the general public, hunting, fishing, trapping and other recreational activities are still permitted in areas with an interim land withdrawal.



Kwets'oot'àà is an area of approximately 590 km² of the northern portion of the north arm of Great Slave Lake and includes the mainland shoreline, numerous islands, and the water of the lake itself.

For more information, call (867) 669-2593 or contact the PAS Secretariat: (867) 920-3179; nwt_pas@gov.nt.ca



www.nwtpas.ca